


Req'd.	Size	W.T.	Item	Req'd.	Size	W.T.	Item
15	3	740 A-239	W. EH.	1	3	740 A-239	W. Tee
			W. EH.				W. Tee
			W. EH.				
				✓ 1	3	740 A-234	W. Cap
		S.R.W. EH.					
							W. Red
		45° EH.					W. Red
		45° EH.					
						XH. S.W.	T.S.E.
						XH. S.W.	T.S.E.

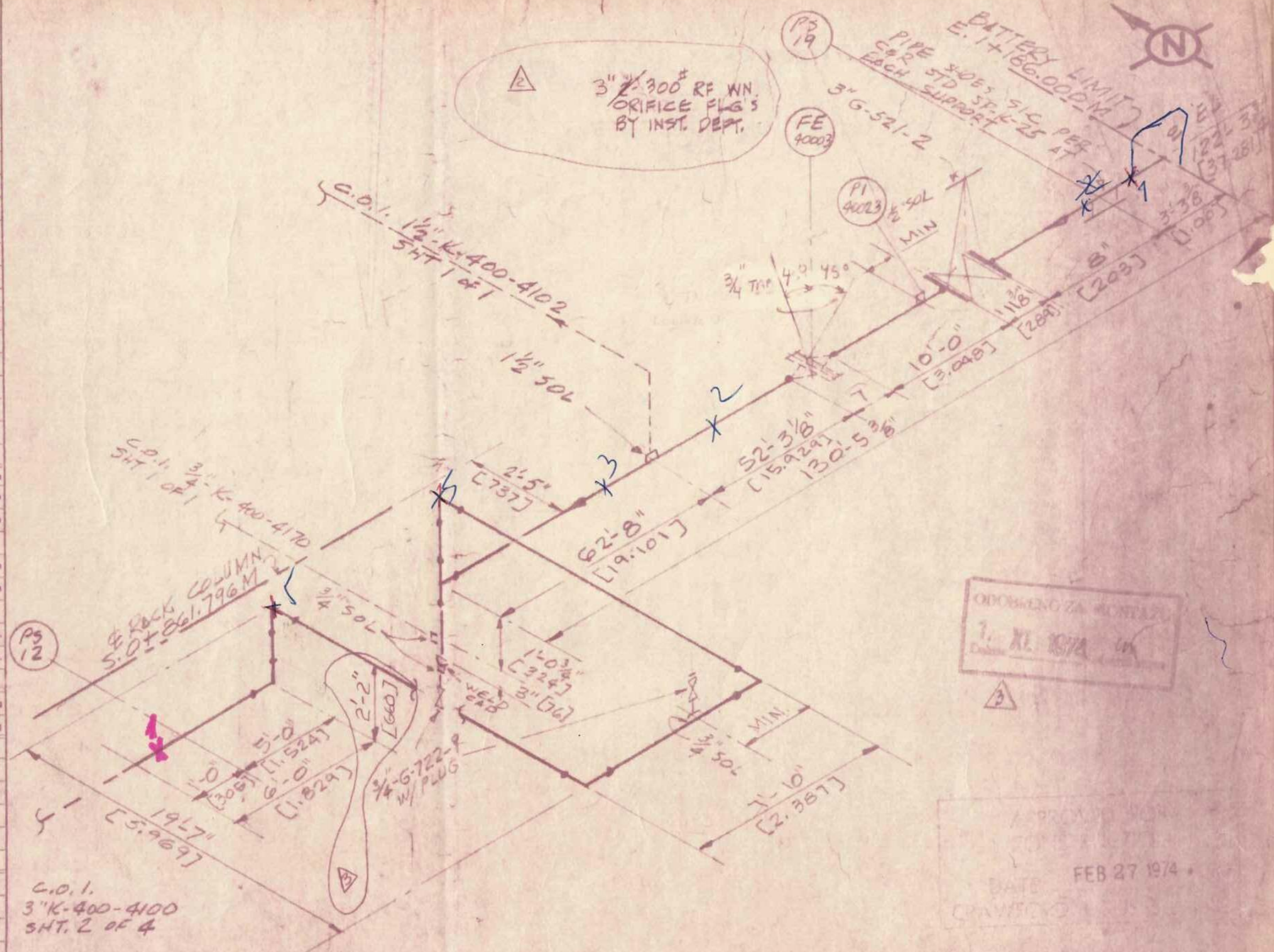
Req'd.	Size	Press	Bore	Req'd.	Size	Press	Bore
12	3	150 RF 300 lb	S.O. Fig. 240				W.N.
			S.O. Fig.				W.N.
							W.N.
			Blind Fig.				
			Blind Fig.				Sor'd.

Req'd.	Size	Req'd.	Size	Item
				90° Ell.
				90° Ell.
				90° Ell.
✓ 1	3x1 1/2 3/4			300" SOL
				Full Cplg.
				Full Cplg.
✓ 3	3x1 1/2 3/4			300" SOL
				X.H. Pipe Nip.
				X.H. Pipe Nip.
				X.H. Pipe Nip.
				X.H. Pipe Nip.
				St. Plug
✓ 1	3x1 1/2 3/4			300" SOL
				St. Bushing

Item	Q	S	Fig. No.	Q	S	Fig. No.
Gate	✓ 2	3/4	G-722-9			
Gate	✓ 1	3	G-521-2			
Globe						
Plug						
Check						

Gaskets	2	3" 300 # F.F.B. "FLEX.	
Bolts	16	3/4" x 4"  3/4 x 3/4	87 STUDS

PIPE & R	187° Rt.	3	Sch. 40 A 53 Gr B BE	Smis. Pipe
	Ft.		Sch.	Smis. Pipe
	Ft.		Sch.	Smis. Pipe



ADDENDUM DIM	Stress Analyzed	Temp.	Area	400	Field	CRAWFORD & RUSSELL INCORPORATED				
CORRECT ORIFICE FUG SIZE	D/MAY	Pressure	Color	—	Kab.	Date	Drawn By	Job No.	Commodity	H.P. STEAM
REVISED B.O.M	Stress Believe	Insulation	Reference Plan Dwg.		Shop	1/25/74	3LD12	7,219	Line No.	3"-K-400-4100
ISSUE FOR CONSTRUCTION	Per Spec.	50	P-401		Fab.					