

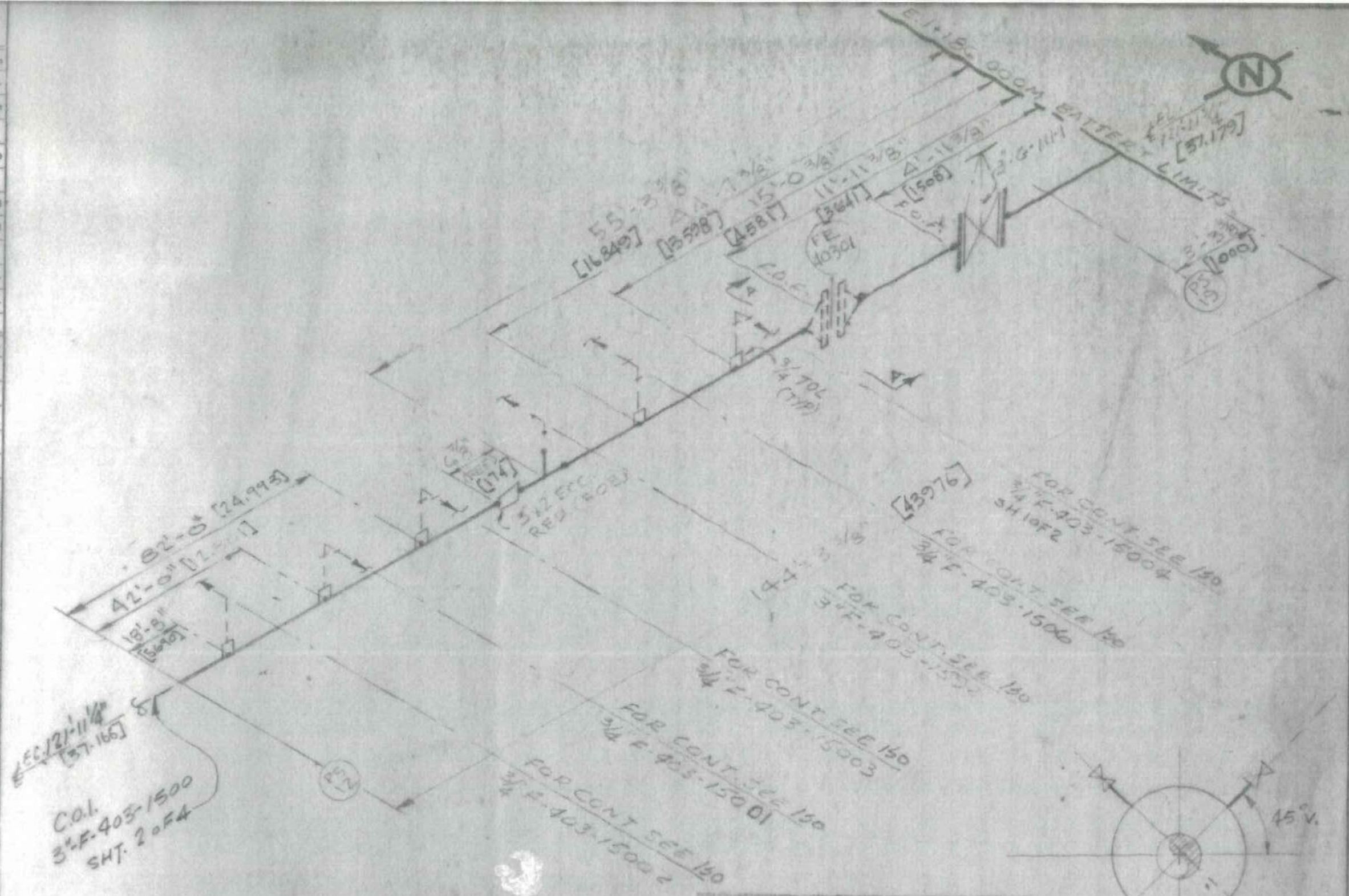
Req'd	Size	W.T.	Item	Req'd	Size	W.T.	Item
			W. Ell.	1	3	40 A234	W. T.
			W. Ell.				W. T.
			W. Ell.				
			S.R.W. Ell.				W. Cap
			48" Ell.	1	3x2	40 A234	W. Red
			46" Ell.				W. Red
			XH. S.W.			T.S.E.	
			XH. S.W.			T.S.E.	

ten'd.	Size	Press	Bore	Req'd.	Size	Press	Bore
2	3	150FF	S.O. Fig				W.N.
			S.O. Fig.				W.N.
							W.N.
			Blind Fig.				
			Blind Fig.				Sor'd.

sq'd.	Size	Item	Req'd.	Size	Item
		90° El.			Tee
		90° El.			Tee
		90° El.			
					Union
		Full Cplg.			Union
		Full Cplg.	3	2x ³ / ₄ 7/8 3000" TOL.	
					X.H. S.W. T.B.E.
		X.H. Pipe Nip.			X.H. S.W. T.B.E.
		X.H. Pipe Nip.	2	3x ³ / ₄ 1 1/8 3000" TOL	
		X.H. Pipe Nip.			Stl. Plug
					Stl. Bushing

Item	Q	S	Fig. No.	Q	S	Fig. No.
Date	1	3	G-III-1			
Gate						
Globe						
Plug						
Check						
Baskets	2	3	150 F.F.K. COMP A3B			
bolts	8	5/8	x 3 1/2 BT-STUD			

55	Ft.	3	Sch. 40 A-53 Gr. $\frac{1}{2}$	BE	Smis. Pipe
89	Ft.	1	Sch. 8	2 2 2	Smis. Pipe
	Ft.		Sch.		Smis. Pipe



APPROVED FOR
CONSTRUCTION
DATE APR 2 1974
CRAWFORD & RUSSELL, INC.

SECTION "A-A"

[illegible]